

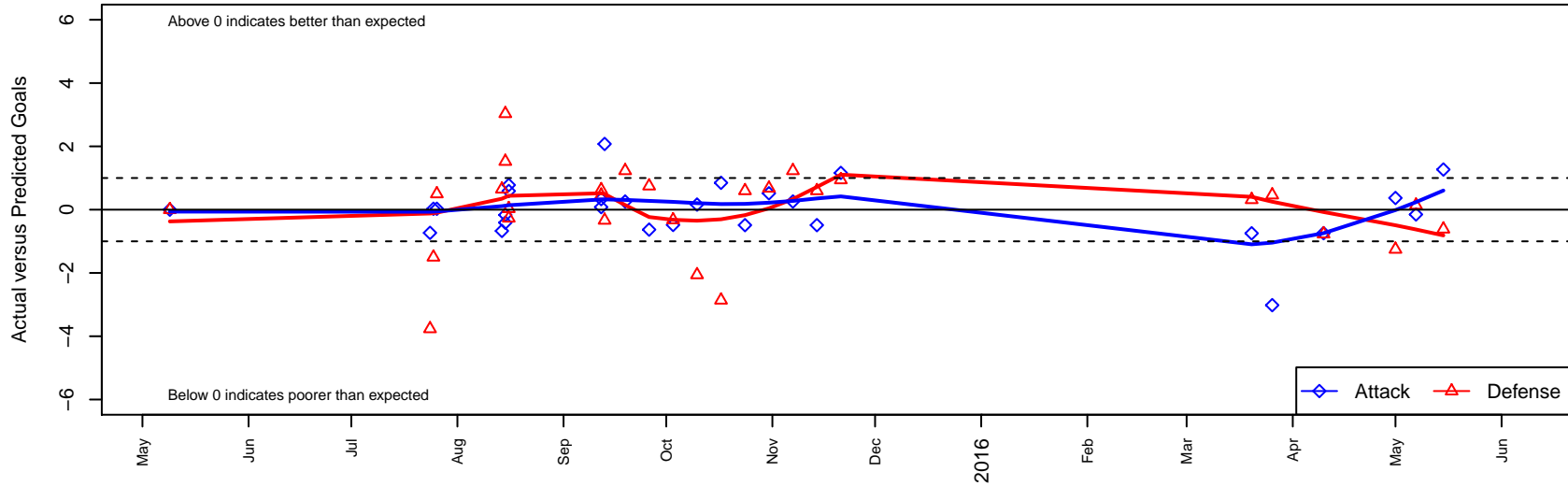
FC Spokane Grey Triplett B01

FC Spokane
 Spokane, WA
 B01 total strength=942
 attack=2.73 defense=0.98
 fall league = PSPL–Inland Div 1 U14
 spr league = Spr PSPL–Inland Div 1 U14
 notes= Triplett 2014

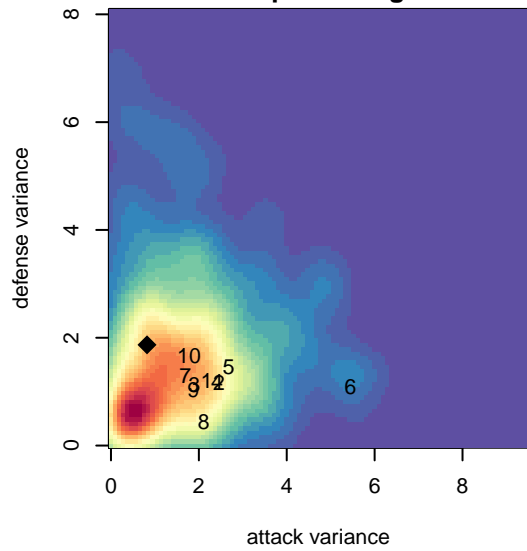
alt names used:
 FC SPOKANE TRIPLETT U01B (WA)
 FC SPOKANETRIPLETT U01B
 FC Spokane B01 Grey–Triplett
 FC SPOKANE TRIPLETT U01B (WA)
 FC Spokane B01 Grey–Triplett

Venues played:
 2014 Spr PSPL–Inland Div 2 U13
 2015 River City Cup U–13.14 Silver U14
 2015 Les Schwab NW Cup U14 U14
 2015 Pend Orielle Cup U14/15 Silver
 2015 PSPL–Inland Div 1 U14
 2015 Spr PSPL–Inland Div 1 U14

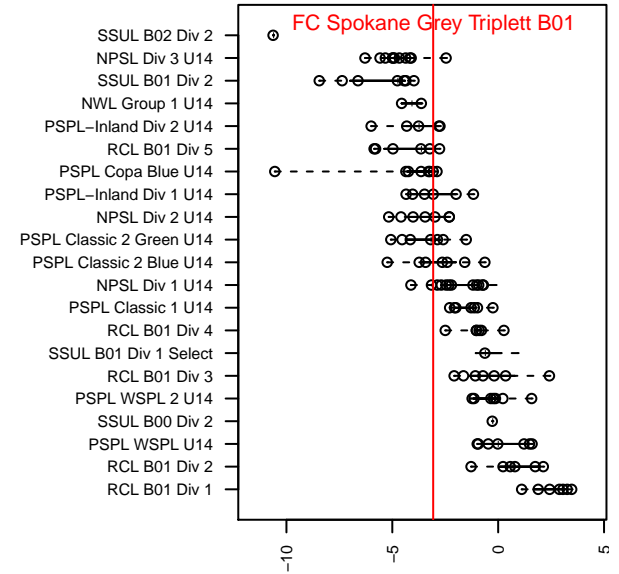
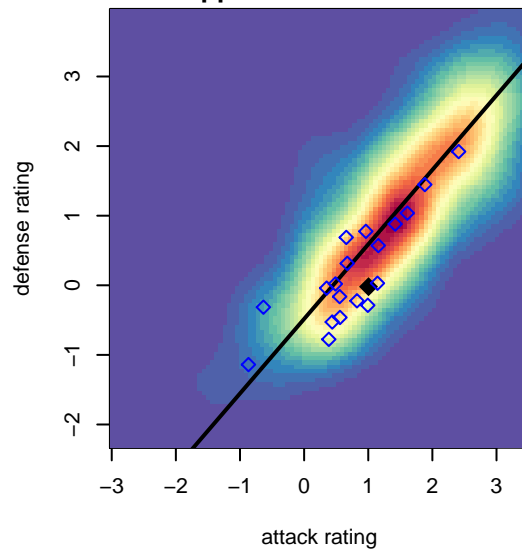
FC Spokane Grey Triplett B01
 Dots are actual minus expected GF (blue circles) and GA (red triangles).
 Blue line is smoothed change in attack strength. Red is smoothed change in defense strength.



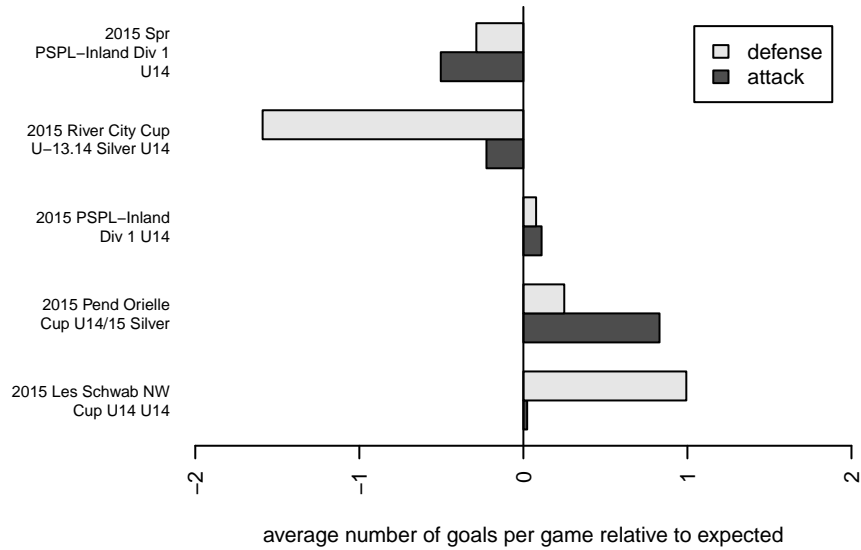
**attack and defense variance (black dot)
relative to other teams
and top 10 in region**



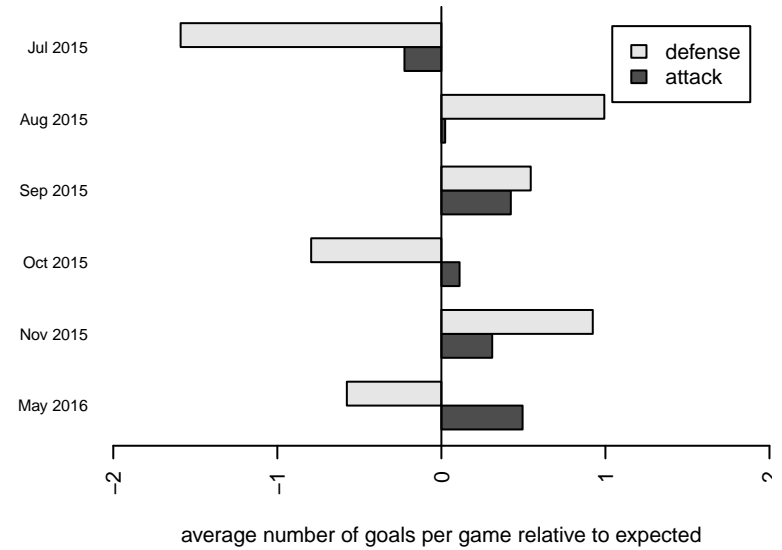
**attack and defense rating
relative to others at age
and all opponents in last 13 months**



Performance relative to 13 month average



Performance relative to 13 month average



date	home		away		venue	pred.home	pred.away
2016-05-15	FC Spokane Grey Triplet B01	2	Sting SC Valencia B01	7	2015 Spr PSPL-Inland Div 1 U14	0.73	6.39
2016-05-07	FC Spokane Grey Triplet B01	1	Cobra Morritos B01	4	2015 Spr PSPL-Inland Div 1 U14	1.15	4.14
2016-05-01	FC Spokane Grey Triplet B01	2	FC Spokane Black 2002B	3	2015 Spr PSPL-Inland Div 1 U14	1.63	1.75
2016-04-10	Breakers Black Andersson 2001B	2	FC Spokane Grey Triplet B01	2	2015 Spr PSPL-Inland Div 1 U14	1.23	2.74
2016-03-26	CB United B01	3	FC Spokane Grey Triplet B01	0	2015 Spr PSPL-Inland Div 1 U14	3.46	3.02
2016-03-20	3 Rivers District Black B01	2	FC Spokane Grey Triplet B01	3	2015 Spr PSPL-Inland Div 1 U14	2.32	3.75
2015-11-21	Spokane Scotties Pratt B01	2	FC Spokane Grey Triplet B01	5	2015 PSPL-Inland Div 1 U14	2.94	3.84
2015-11-14	FC Spokane Grey Triplet B01	4	FC Spokane Grey B01	1	2015 PSPL-Inland Div 1 U14	4.49	1.60
2015-11-07	FC Spokane Grey Triplet B01	3	Breakers Black Andersson 2001B	0	2015 PSPL-Inland Div 1 U14	2.74	1.23
2015-10-31	Washington East SC Davis B01	2	FC Spokane Grey Triplet B01	2	2015 PSPL-Inland Div 1 U14	2.68	1.48
2015-10-24	FC Spokane Grey B01	1	FC Spokane Grey Triplet B01	4	2015 PSPL-Inland Div 1 U14	1.60	4.49
2015-10-17	Cobra Morritos B01	7	FC Spokane Grey Triplet B01	2	2015 PSPL-Inland Div 1 U14	4.14	1.15
2015-10-10	FC Spokane Grey Triplet B01	4	Spokane Scotties Pratt B01	5	2015 PSPL-Inland Div 1 U14	3.84	2.94
2015-10-03	FC Spokane Grey Triplet B01	1	Washington East SC Davis B01	3	2015 PSPL-Inland Div 1 U14	1.48	2.68
2015-09-26	FC Spokane Grey Triplet B01	1	FC Spokane Black 2002B	1	2015 PSPL-Inland Div 1 U14	1.63	1.75
2015-09-19	Breakers Black Andersson 2001B	0	FC Spokane Grey Triplet B01	3	2015 PSPL-Inland Div 1 U14	1.23	2.74
2015-09-13	Sting SC Liverpool B01	2	FC Spokane Grey Triplet B01	7	2015 Pend Orielle Cup U14/15 Silver	1.66	4.92
2015-09-12	Idaho Thunder B01	0	FC Spokane Grey Triplet B01	8	2015 Pend Orielle Cup U14/15 Silver	0.46	7.67
2015-09-12	Flathead Force Green B01	1	FC Spokane Grey Triplet B01	6	2015 Pend Orielle Cup U14/15 Silver	1.63	5.92
2015-08-16	Crossfire Premier D B01	1	FC Spokane Grey Triplet B01	5	2015 Les Schwab NW Cup U14 U14	0.73	4.22
2015-08-16	FC Spokane Grey Triplet B01	1	SSC Shadow A B01	10	2015 Les Schwab NW Cup U14 U14	0.41	10.03
2015-08-15	Cobra Blue B01	0	FC Spokane Grey Triplet B01	3	2015 Les Schwab NW Cup U14 U14	1.52	3.17
2015-08-15	SSC Shadow A B01	7	FC Spokane Grey Triplet B01	0	2015 Les Schwab NW Cup U14 U14	10.03	0.41
2015-08-14	Sandpoint Strikers B01	1	FC Spokane Grey Triplet B01	2	2015 Les Schwab NW Cup U14 U14	1.65	2.67
2015-07-26	Blue Mountain Jaguars B01	5	FC Spokane Grey Triplet B01	1	2015 River City Cup U-13.14 Silver U14	5.50	0.97
2015-07-25	FC Spokane Grey Triplet B01	1	Blue Mountain Jaguars B01	7	2015 River City Cup U-13.14 Silver U14	0.97	5.50
2015-07-24	FC Spokane Grey Triplet B01	1	Washington East SC B02	7	2015 River City Cup U-13.14 Silver U14	1.73	3.23
2015-05-09	Spokane Pumas Platinum B01	2	FC Spokane Grey Triplet B01	2	2014 Spr PSPL-Inland Div 2 U13	2.00	2.00